



Bmi-1 Monoclonal Antibody

Catalog No	YP-Ab-00957
Isotype	IgG
Reactivity	Human
Applications	WB;IHC;IF;FCM;ELISA
Gene Name	BMI1
Protein Name	Polycomb complex protein BMI-1
Immunogen	Purified recombinant fragment of human Bmi-1 expressed in E. Coli.
Specificity	Bmi-1 Monoclonal Antibody detects endogenous levels of Bmi-1 protein.
Formulation	Ascitic fluid containing 0.03% sodium azide,0.5% BSA, 50%glycerol.
Source	Monoclonal, Mouse
Purification	Affinity purification
Dilution	Western Blot: 1/500 - 1/2000. Immunohistochemistry: 1/200 - 1/1000. Immunofluorescence: 1/200 - 1/1000. Flow cytometry: 1/200 - 1/400. ELISA: 1/10000. Not yet tested in other applications.
Concentration	1 mg/ml
Purity	≥90%
Storage Stability	-20°C/1 year
Synonyms	BMI1; PCGF4; RNF51; Polycomb complex protein BMI-1; Polycomb group RING finger protein 4; RING finger protein 51
Observed Band	
Cell Pathway	Nucleus . Cytoplasm .
Tissue Specificity	Epithelium,Erythrocyte,Muscle,Thymus,
Function	disease:Cooperates with the MYC oncogene to produce B-lymphomas.,function:Component of the Polycomb group (PcG) multiprotein PRC1 complex, a complex required to maintain the transcriptionally repressive state of many genes, including Hox genes, throughout development. PcG PRC1 complex acts via chromatin remodeling and modification of histones; it mediates monoubiquitination of histone H2A 'Lys-119', rendering chromatin heritably changed in its expressibility. In the PRC1 complex, it is required to stimulate the E3 ubiquitin-protein ligase activity of RNF2/RING2.,PTM:May be polyubiquitinated; which does not lead to proteasomal degradation.,similarity:Contains 1 RING-type zinc finger.,subunit:Component of chromatin-associated class II polycomb repressive complex 1 (PRC1/hPRC-H) at least composed of PCGF2/RNF110, BMI1/PCGF4, CBX2/M33, CBX4/PC2, CBX8/PC3, PHC1, PHC2, PHC3, SCMH1, RING1 and R



Background

BMI1 proto-oncogene, polycomb ring finger(BMI1) Homo sapiens This gene encodes a ring finger protein that is major component of the polycomb group complex 1 (PRC1). This complex functions through chromatin remodeling as an essential epigenetic repressor of multiple regulatory genes involved in embryonic development and self-renewal in somatic stem cells. This protein also plays a central role in DNA damage repair. This gene is an oncogene and aberrant expression is associated with numerous cancers and is associated with resistance to certain chemotherapies. A pseudogene of this gene is found on chromosome X. Read-through transcription also exists between this gene and the upstream COMM domain containing 3 (COMMD3) gene. [provided by RefSeq, Sep 2015],

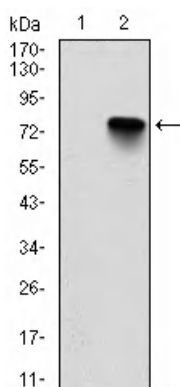
matters needing attention

Avoid repeated freezing and thawing!

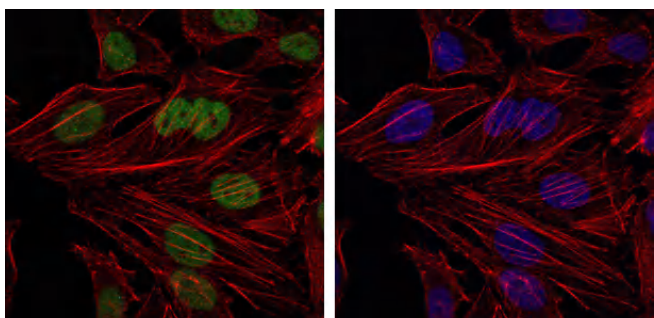
Usage suggestions

This product can be used in immunological reaction related experiments. For more information, please consult technical personnel.

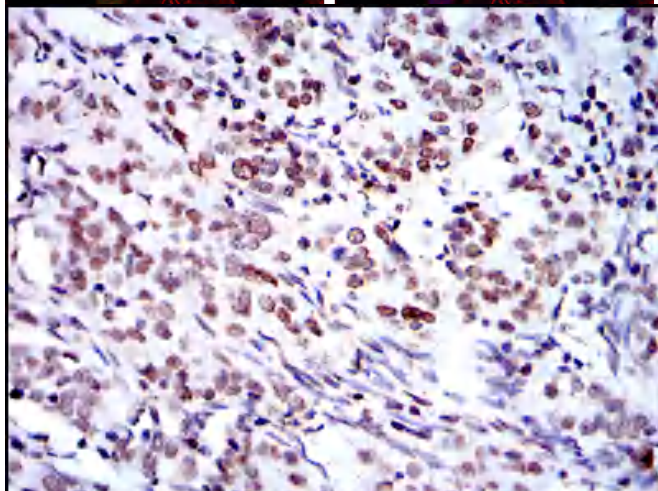
Products Images

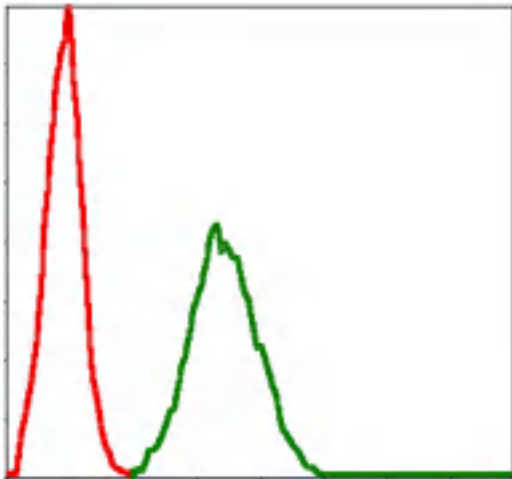


Western Blot analysis using Bmi-1 Monoclonal Antibody against HEK293 (1) and BMI1-hlgGfc transfected HEK293 (2) cell lysate.

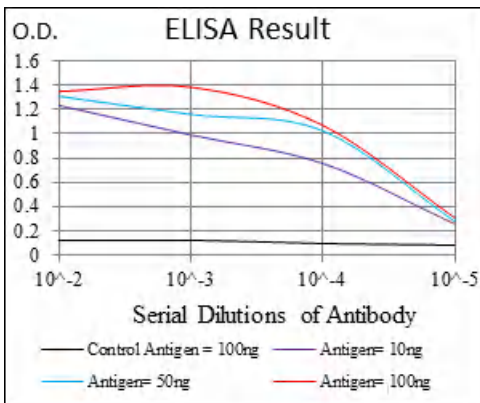


Immunohistochemistry analysis of paraffin-embedded cervical cancer tissues with DAB staining using Bmi-1 Monoclonal Antibody.





Immunofluorescence analysis of Hela cells using Bmi-1 Monoclonal Antibody (green). Blue: DRAQ5 fluorescent DNA dye. Red: Actin filaments have been labeled with Alexa Fluor-555 phalloidin.



Flow cytometric analysis of NIH/3T3 cells using Bmi-1 Monoclonal Antibody (green) and negative control (red).